

HDS-S1016R/E

Network Storage Device

Introduction:

As the cost-effective network storage device, HDS-S1016R/E is developed on the controller architecture and adopts multiple advanced technologies, including video streaming technology, RAID technology, intelligent technology, etc. It is integrated with camera management, video storage, live view, search, playback, download and other functionalities. With this product, you can build a small-scale video management platform independently, or establish a medium/large-scale video management system incorporation with the supporting service platform.

Thanks to these features, HDS-S1016R/E is widely applied to the security surveillance projects of the bank, school, store, enterprise, hotel, etc.

Available Model:

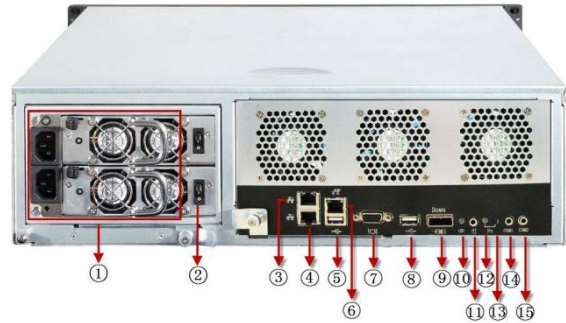
HDS-S1016R/E

Main Features:

- 64-bit embedded multi-core processor with 4GB high-speed buffer; 6Gbps SAS transmission; SBB2.0 technology
- Connectable to encoding devices (IPC/DVR/encoder/NVR) using standard stream media protocol such as RTSP, ONVIF, PISIA, etc.; Connectable to encoding devices from third-party manufacturers such as AXIS, PELCO, Bosch, Canon, Panasonic, SAMSUNG, SONY, etc.
- Support 300-ch 2Mbps concurrent writing; 20-ch synchronous playback
- Integrated with CVR/IPSAN/NAS application service
- Support built-in stream media module to forward real-time video stream
- Up to 16 SATA hard disks (hot swap) can be installed; Up to 64TB capacity is supported for each device and 2-level expansion cabinets can be cascade connected; Up to 192TB capacity supported for each system
- Support RAID 0, 1, 3, 5, 6, 10, 50, JBOD, hot spare
- Support multiple recording types, including continuous recording, manual recording, main and sub stream recording; motion recording, sensor alarm recording, video loss alarm recording, etc.
- Search, play back, download record files by type or time
- User friendly B/S or C/S interface supporting one-touch quick setting
- Multiple alarm linkage actions such as acousto-optic, text message, email
- Download device logs to USB flash drive automatically
- 2 Gigabit Ethernet ports supporting network interface bonding
- Support N+1 hot spare system
- Automatic Network Replenishment (ANR) ensuring data integrity
- Data backup increasing data security
- Lock and archive the key video file for protection

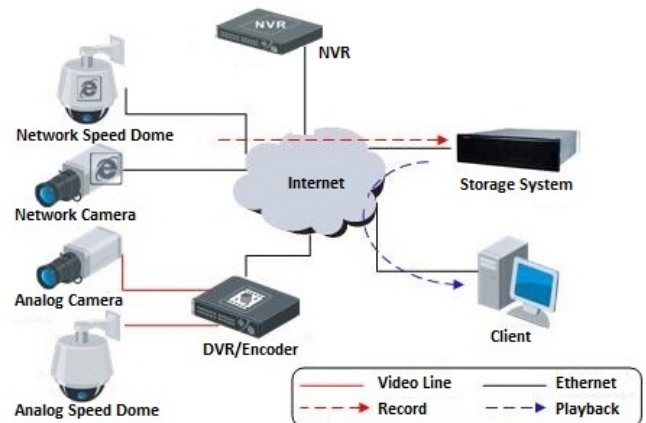


Physical Interfaces:



- | | |
|--------------------|-------------------------------------|
| 1: Power Supply | 9: Expansion Port |
| 2: Power Switch | 10: Expansion Port Indicator |
| 3: Data Port 2 | 11: Audio Out |
| 4: Data Port 1 | 12: FN Device Positioning Indicator |
| 5: USB Interface | 13: FN Device Positioning Button |
| 6: Management Port | 14: COM1: Hyper Terminal |
| 7: VGA Output | 15: COM2: Mobile Phone Alarm/UPS |
| 8: USB Interface | |

Typical Application:



Performance Index:

Mode	IPSAN	CVR
Resolution		
D1 (2Mbps) Record + Playback	180-ch	320-ch

Specifications:

Model	HDS-S1016R/E	
Controller	Processor	64-bit multi-core processor
	High-speed buffer	4GB (expandable to 8G)
Video/Audio input and output	Record + Playback	320-ch (2Mps)
General	Operating system	Windows, Linux, Solaris, HP-UX, AIX, MacOS
	HDD slot	16
	HDD interface	SATA /1TB,2TB,3TB,4TB
	Hot-swap disk	Supported
	RAID level	RAID 0, 1,3,5,6,10,50,JBOD, hot spare
Storage management	Disk management	S.M.A.R.T. ((Self-Monitoring, Analysis and Reporting Technology)
	LUN management	NAS Volume, iSCSI Volume, Record Volume
	Data protection	WORM tamper-proof , Real-time backup of system information, LUN clone
Record management	Recording type	Continuous/ Manual / Main and Sub Stream / Motion / Sensor, etc.
	Recording backup	Local backup; Remote backup
	Recording protection	Lock key video file for protection, N+1 hot spare system, ANR, video loss alarm
	Search mode	By time / type
	Download mode	Quick download, batch download, segment download, merging download
Device management	Management method	Web-based GUI, CLI serial port, integrated management of multiple units
	Alarm type	Sound, Flash LED, Email, SMS,Warning on device management page
	Log download	Auto-down load by USB flash drive,Remote backup via web browsing
Network	Protocol	RTSP / ONVIF / PSIA / iSCSI / NFS / CIFS / FTP / HTTP / AFP
External port	Data port	2 (can be expanded to 6), 10M/100M/1000M self-adaptive Ethernet interface
	Management port	1, 10M/100M/1000M self-adaptive Ethernet interface
	SAS expansion port	1 (6Gbps)
	VGA output	1
	COM interface	2 (1 for hyper terminal and 1 for mobile phone alarm/UPS)
	USB interface	2
Others	Power supply	Redundant (1+1); single power available
	Power consumption	Max.460W (with hard disk, redundant power); Max.400W(with hard disk, single power)
	Temperature	Operating: 5°C-40°C; Storage: -20°C-70°C
	Humidity	Operating: 20%-80% RH(non-freezing, non-condensing); Storage: 5%-90% RH(non-freezing, non-condensing)
	Chassis	Standard 19-inch rack-mounted 3U chassis
	Dimensions (W×H×D)	440×132×480mm
	Weight	Approx.20Kg (without hard disk, redundant power); Approx.18.5Kg (without hard disk, single power)